

AVAILABLE

MODERN OFFICE & PROFESSIONAL SPACE



 the Constitution
the Building

1950 Street Road | Bensalem, PA



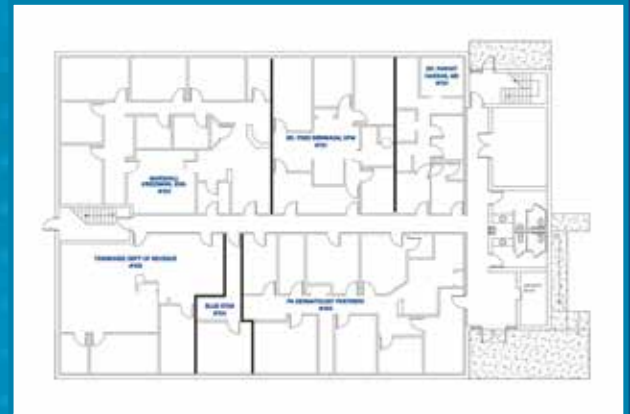
Features:

- Four (4) story office building of approximately 33,000 sq. ft.
- Office space ranging from approximately 425 to 4,050 sq. ft., available for immediate occupancy
- Constructed to tenant specifications
- Elevator serviced
- 24-hour building access
- Tenant controlled heating and cooling
- Prominent signage on Street Road
- Strategically located at the intersection of Street Road and Hulmeville Road, providing convenient access to I-95, U.S Route 1, and the PA Turnpike

1950 Street Road | Bensalem, PA



Other floor plans
available upon request



First Floor Plan



Commercial Real Estate Services

275 Commerce Drive | Suite 104 | Fort Washington, PA 19034
215-886-9400 | www.situsproperties.com