

117 S. SYCAMORE STREET

NEWTOWN, PA

±1,650 SF AVAILABLE FOR LEASE



PROPERTY FEATURES

- Two (2) story commercial building containing approximately 4,000 square feet
- Available space of approximately 1,650 square feet located on the ground floor
- Excellent visibility with retail exposure and signage on S. Sycamore Street
- Ample on-site parking
- Located one block from Newtown Borough
- Neighboring tenants include Starbucks, Bluemercury, 7-Eleven, Athleta, Bon Appetit and PA Wine and Spirits

DEMOGRAPHICS

	<u>1 Mile</u>	<u>3 Miles</u>	<u>5 Miles</u>
Population	7,131	42,674	103,277
Households	2,727	16,330	38,103
Avg. HH Income	\$143,512	\$136,539	\$141,958

Contact:

275 Commerce Drive Suite 104
Fort Washington, PA 19034
215-886-9400
www.situsproperties.com

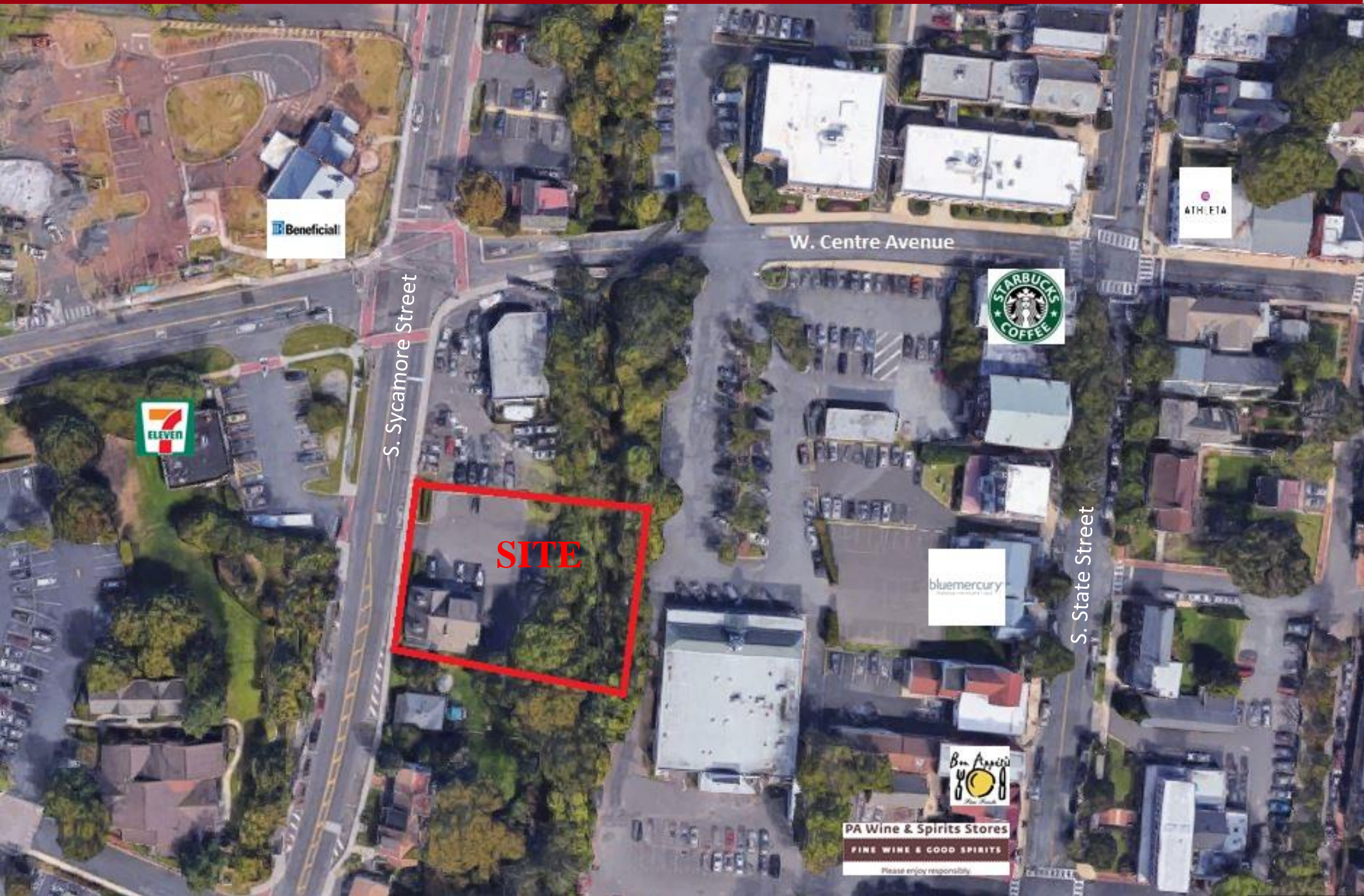
The foregoing information was furnished to us by sources which we deem to be reliable, but no warranty or representation is made as to the accuracy thereof. Subject to the correction of errors, omissions, change of price, prior sale or withdrawal from market without notice.



117 S. SYCAMORE STREET

NEWTOWN, PA

±1,750 SF AVAILABLE FOR LEASE



S. Sycamore Street

W. Centre Avenue



SITE



S. State Street

