

PROFESSIONAL OFFICE SPACE

410 W. Main Street | Lansdale | PA

LEASE



PROPERTY HIGHLIGHTS

- Two (2) story commercial building of 7,600 +/- square feet.
- Available office space of 970 +/- square feet located on the 2nd floor.
- Immediate occupancy.
- On-site parking.
- Located in the center of Lansdale Borough's retail corridor with convenient access to shopping, restaurants and the Madison Lansdale Station.
- Walking distance to the SEPTA Lansdale Train Station.

**Commercial
Real Estate
Services**

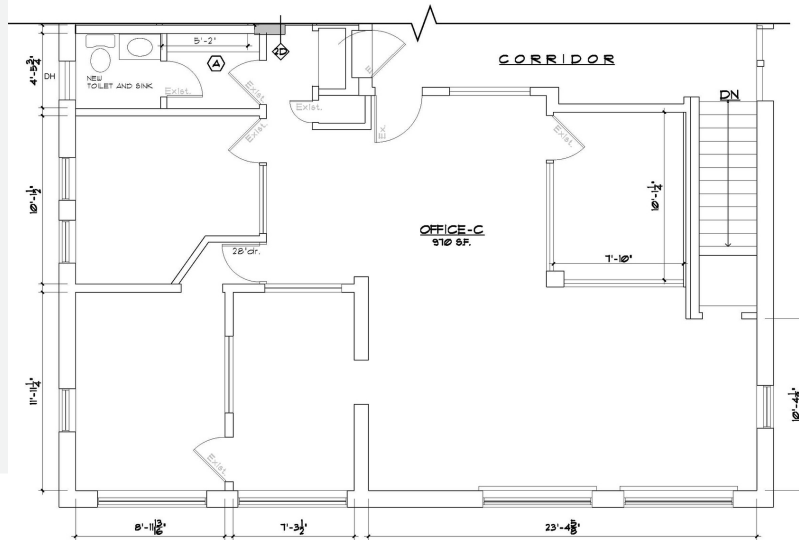
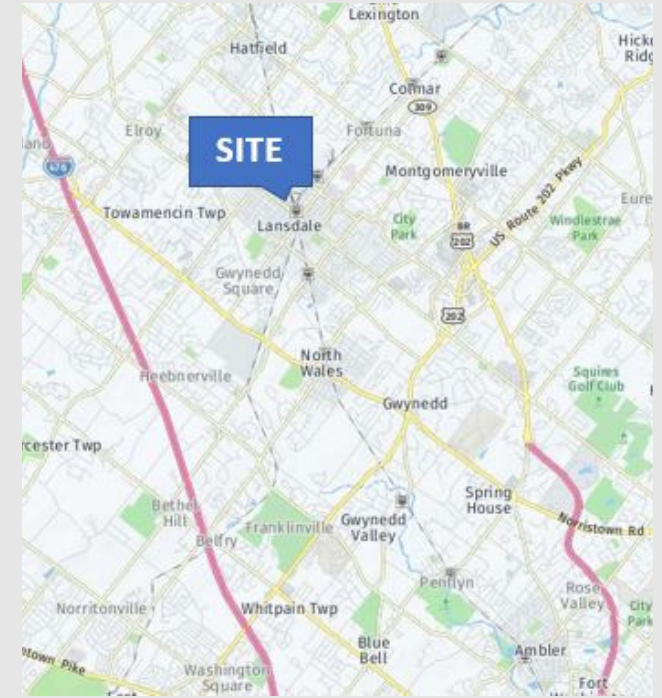


SitusProperties.com
215-886-9400

The foregoing information was furnished to us by sources which we deem to be reliable, but no warranty or representation is made as to the accuracy thereof. Subject to correction of errors, omissions, change of price, prior sale or withdrawal from market without notice.

PROFESSIONAL OFFICE SPACE

410 W. Main Street | Lansdale | PA



**Commercial
Real Estate
Services**

**SitusProperties.com
215-886-9400**

The foregoing information was furnished to us by sources which we deem to be reliable, but no warranty or representation is made as to the accuracy thereof. Subject to correction of errors, omissions, change of price, prior sale or withdrawal from market without notice.