

PRIME COMMERCIAL & OFFICE SPACE

# 307 Derstine Avenue | Lansdale | PA

**LEASE**



## PROPERTY HIGHLIGHTS

- Multi-tenant building containing +/- 32,000 square feet of warehouse and commercial/office space.
- Available space of +/- 2,629 and +/- 2,690 square feet.
- Immediate occupancy.
- On- site parking.
- Located in the center of Lansdale Borough's retail corridor with convenient access to shopping, restaurants and the Madison Lansdale Station.
- Walking distance to the SEPTA Lansdale Train Station.



**Commercial  
Real Estate  
Services**



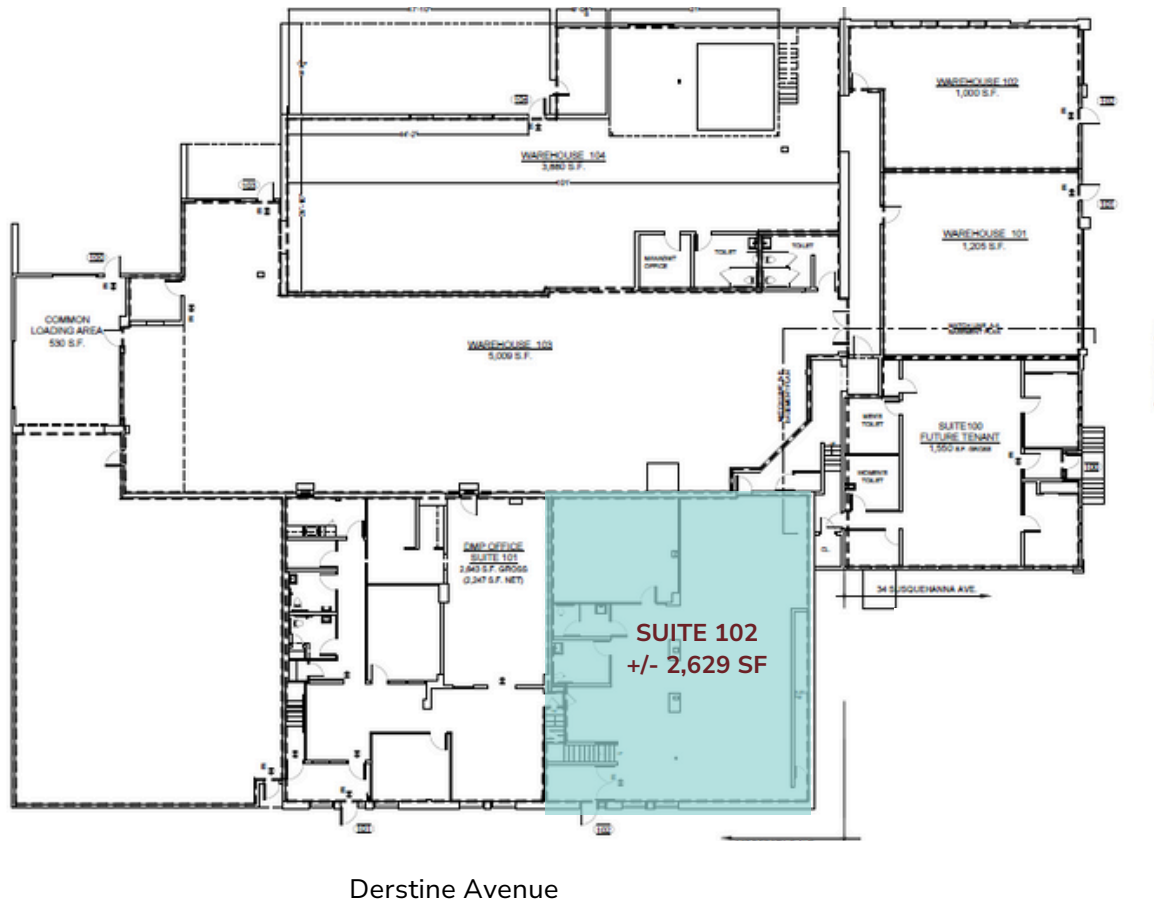
**SitusProperties.com**  
**215-886-9400**

The foregoing information was furnished to us by sources which we deem to be reliable, but no warranty or representation is made as to the accuracy thereof. Subject to correction of errors, omissions, change of price, prior sale or withdrawal from market without notice.

PRIME COMMERCIAL & OFFICE SPACE

# 307 Derstine Avenue | Lansdale | PA

## First Floor



**Commercial Real Estate Services**

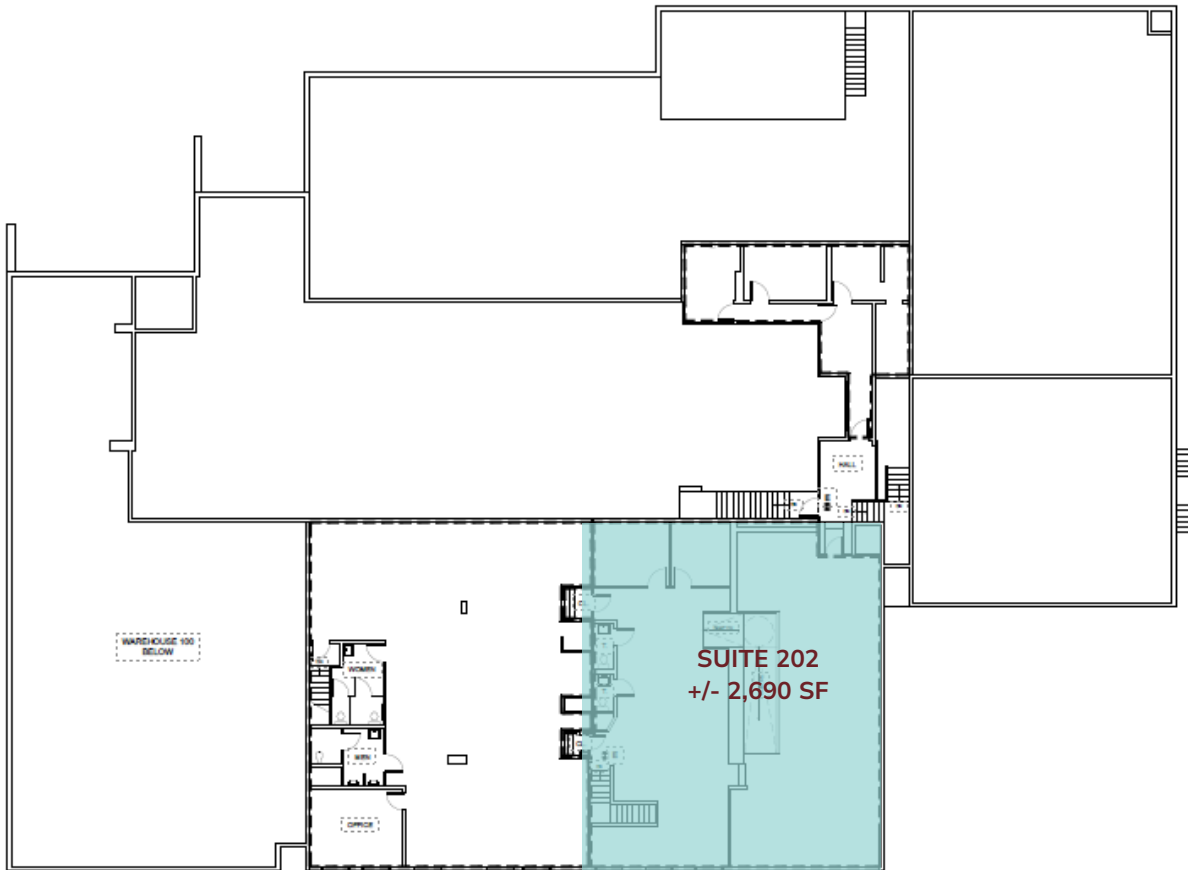
The foregoing information was furnished to us by sources which we deem to be reliable, but no warranty or representation is made as to the accuracy thereof. Subject to correction of errors, omissions, change of price, prior sale or withdrawal from market without notice.

SitusProperties.com  
215-886-9400

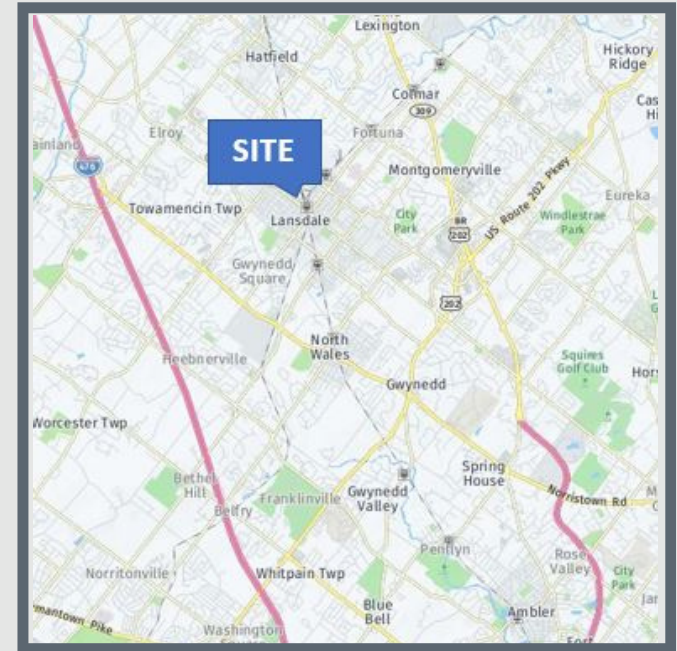
PRIME COMMERCIAL & OFFICE SPACE

# 307 Derstine Avenue | Lansdale | PA

## Second Floor



Derstine Avenue



**Commercial Real Estate Services**

The foregoing information was furnished to us by sources which we deem to be reliable, but no warranty or representation is made as to the accuracy thereof. Subject to correction of errors, omissions, change of price, prior sale or withdrawal from market without notice.

SitusProperties.com  
215-886-9400