

PRIME WAREHOUSE, COMMERCIAL & OFFICE SPACE

307 Derstine Avenue | Lansdale | PA

LEASE



PROPERTY HIGHLIGHTS

- Multi-tenant building containing +/- 32,000 square feet of warehouse and commercial/office space.
- Available Spaces
 - Commercial/Office: Space from +/- 2,580 to +/- 5,270 square feet.
 - Warehouse: +/- 3,000 square feet
 - 20' ceiling
 - Tailgate and drive-in loading
- Immediate occupancy.
- On- site parking.
- Located in the center of Lansdale Borough's retail corridor with convenient access to shopping, restaurants and the Madison Lansdale Station.
- Walking distance to the SEPTA Lansdale Train Station.



**Commercial
Real Estate
Services**



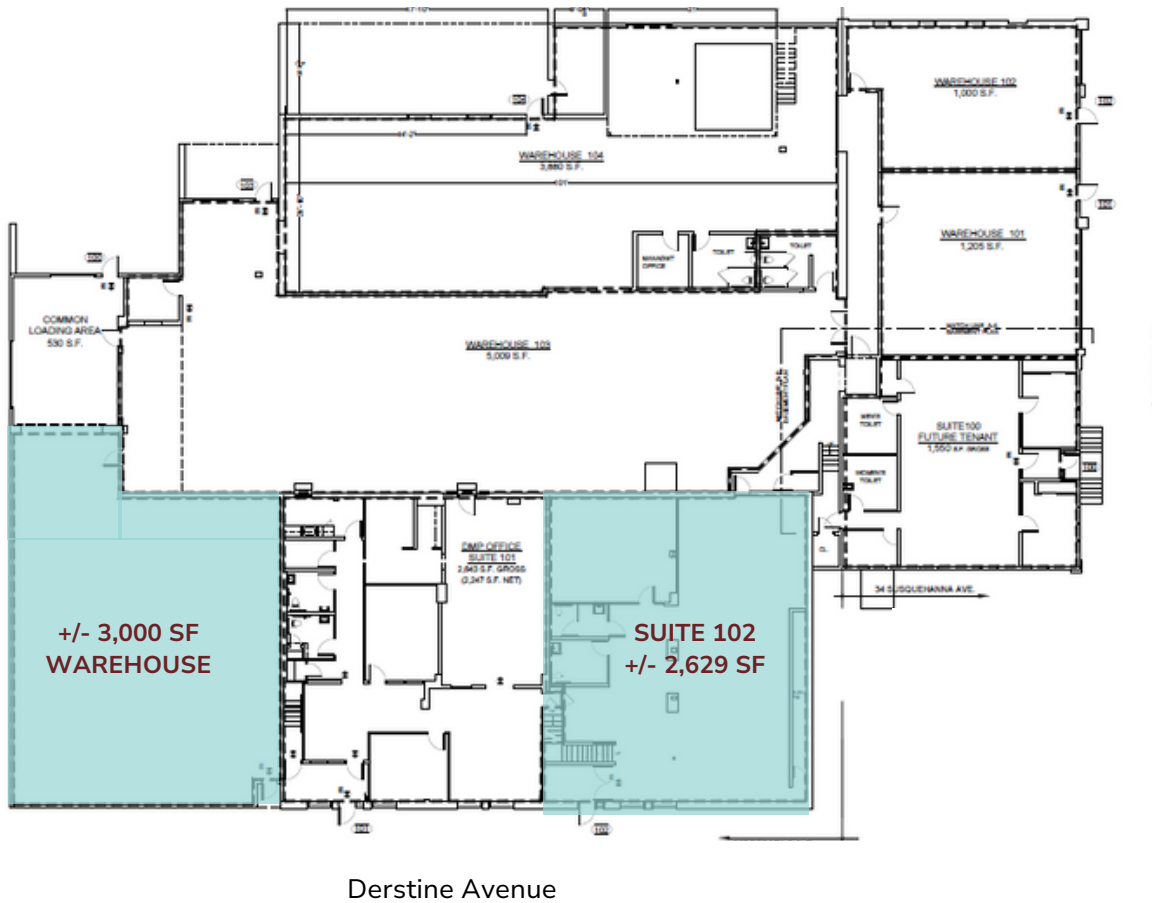
SitusProperties.com
215-886-9400

The foregoing information was furnished to us by sources which we deem to be reliable, but no warranty or representation is made as to the accuracy thereof. Subject to correction of errors, omissions, change of price, prior sale or withdrawal from market without notice.

PRIME WAREHOUSE, COMMERCIAL & OFFICE SPACE

307 Derstine Avenue | Lansdale | PA

First Floor



Commercial Real Estate Services

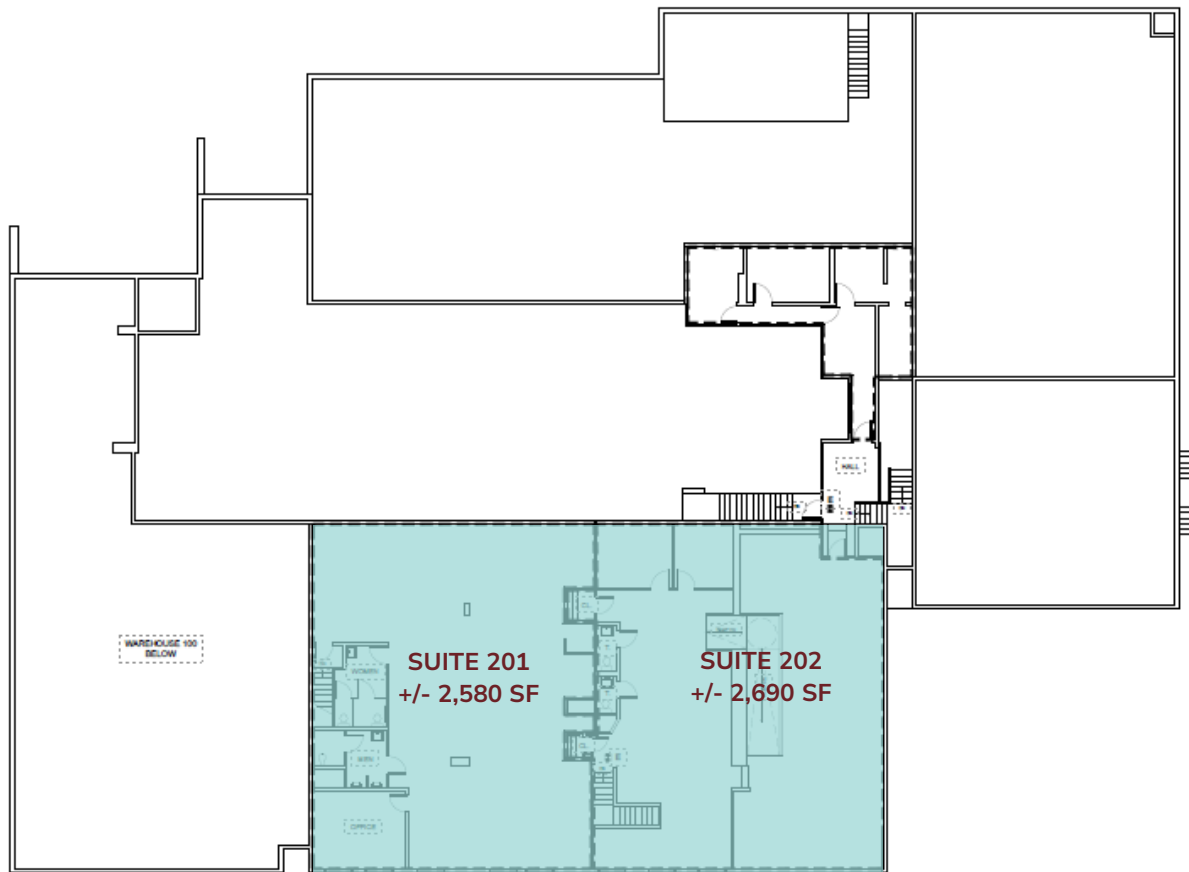
The foregoing information was furnished to us by sources which we deem to be reliable, but no warranty or representation is made as to the accuracy thereof. Subject to correction of errors, omissions, change of price, prior sale or withdrawal from market without notice.

SitusProperties.com
215-886-9400

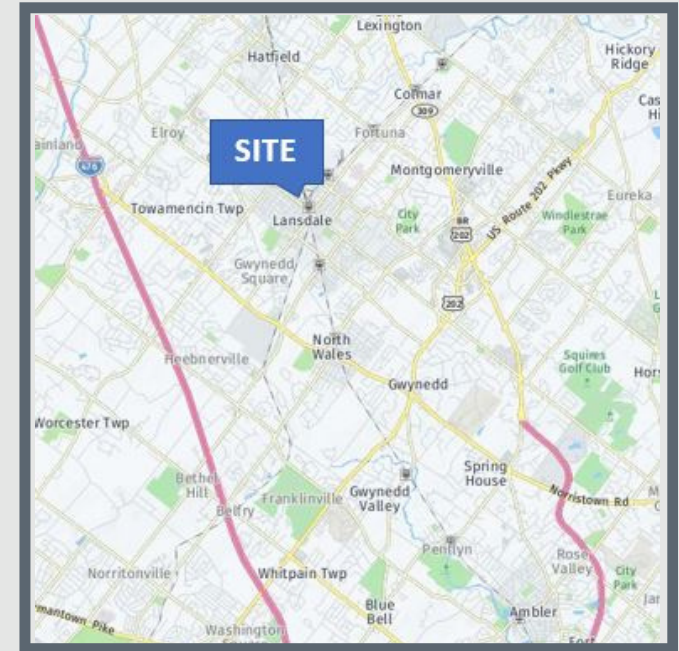
PRIME WAREHOUSE, COMMERCIAL & OFFICE SPACE

307 Derstine Avenue | Lansdale | PA

Second Floor



Derstine Avenue



Commercial Real Estate Services

The foregoing information was furnished to us by sources which we deem to be reliable, but no warranty or representation is made as to the accuracy thereof. Subject to correction of errors, omissions, change of price, prior sale or withdrawal from market without notice.

SitusProperties.com
215-886-9400