

SEAL

OWNER
CAMBONE
 DEVELOPMENT COMPANY
 1030 W. Germantown Pike
 East Hilltown, PA 19403
 Commercial/Industrial
 Office: 610-539-4701
 Fax: 610-539-4701
 Residential
 Office: 610-277-4220
 Fax: 610-539-0498
 www.cambone.com

CONSULTANT

CONSULTANT

CONSULTANT

ARCHITECT
ARCHITECTURAL
CONCEPTS
 LLP
 1000 Locust Hill Road, Suite 200
 P.O. Box 10, Limerick, PA 19354
 Phone: 610-277-4220
 Fax: 610-277-4220
 Email: info@archconcepts.com
 www.archconcepts.com
 Theodore A. Anzures, Jr., AIA
 James L. Lohrey, AIA

PROJECT
 10TH AVE. & LEWIS RD.
 LIMERICK TOWNSHIP
 MONTGOMERY COUNTY
 ROYERSFORD, PA.

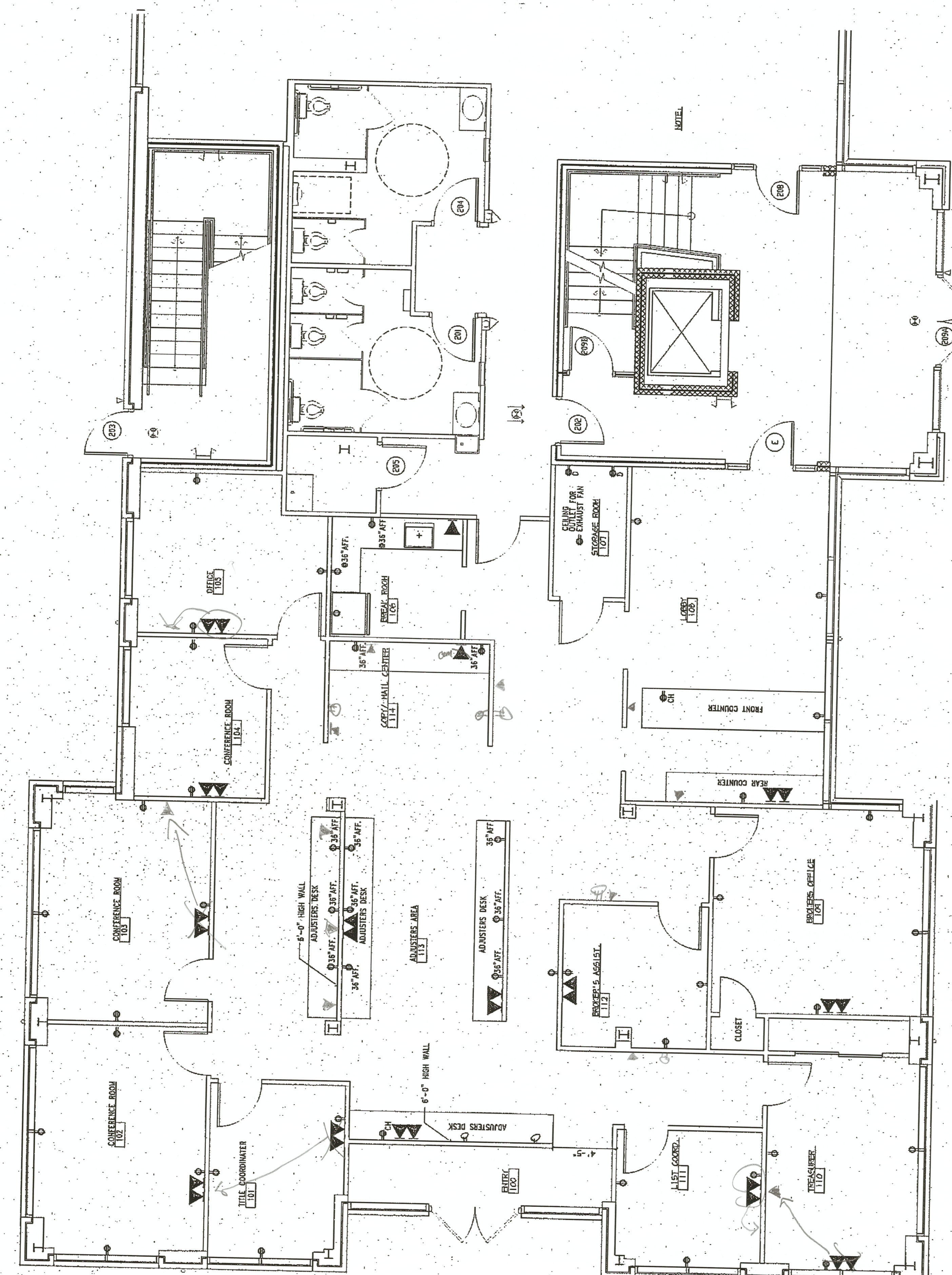
ASSIST TO SELL

REVISIONS

No.	Date	Revision
1	12.07.05	TENANT REVIEW

RECEPTACLE FLOOR PLAN

Issue Date: 11.18.05
 Drawing Scale: AS NOTED
 Drawing Path:
 Drawn By: J.L.B.
 Project Number: C-007
 File Name:
 Plot Scale:
 Paper Size: 30" x 42"



- PROPOSED RECEPTACLE PLAN**
 SCALE: 1/4" = 1'-0"
- LEGEND**
- ▲ EMERGENCY LIGHTING (BATTERY PACK)
 - ▲ EMERGENCY LIGHTING (REMOTE HEAD)
 - ILLUMINATED EXIT SIGN (WALL MOUNTED)
 - ⊕ 24-1000 PIRE EXTINGUISHER
 - 4-TUBE 2x4 FLUORESCENT LIGHT
 - DUPLEX RECEPTACLE
 - GROUND FAULT RECEPTACLE
 - SINGLE POLE WALL SWITCH
 - COMPUTER CABLE LINE
 - PHONE LINE
 - RECESSED FUTURE
 - PREDICATED RECEPTACLE
- CONTACT PERSONS: 610-277-4220
 COMMERCIAL PROJECT MANAGER: DAVID MORGAN
 SENIOR COMMERCIAL MANAGER: FRANK RUSSO

*additional ▼ for Chris
 move ▼ for JD*