

**PRIME OFFICE SPACE**

# 1800 Pennbrook Parkway | North Wales | PA

**Commercial  
Real Estate  
Services**

**LEASE**



## PROPERTY HIGHLIGHTS

- Two-story multi-tenant office building containing approximately 20,250 square feet plus full basement.
- Façade and monument signage available along Church Road.
- Second floor law office space with high-end finishes of approximately 11,340 square feet available for lease.
- Space is divisible.
- Space can be configured to meet specific needs.
- Elevator served.
- Walking distance to SEPTA's Pennbrook Train Station with service between Doylestown and Center City Philadelphia.

Located in Upper Gwynedd Township, Montgomery County north of Philadelphia. The community is home to Merck's West Point manufacturing and office campus. Strategically located adjacent to Lansdale, Upper Gwynedd Township is home to approximately 15,500 people.



The foregoing information was furnished to us by sources which we deem to be reliable, but no warranty or representation is made as to the accuracy thereof. Subject to correction of errors, omissions, change of price, prior sale or withdrawal from market without notice.

**SitusProperties.com**  
**215-886-9400**

## PRIME OFFICE SPACE

# 1800 Pennbrook Parkway | North Wales | PA



Monument Signage



Conference Room



Private Office



Open Office



## North Wales

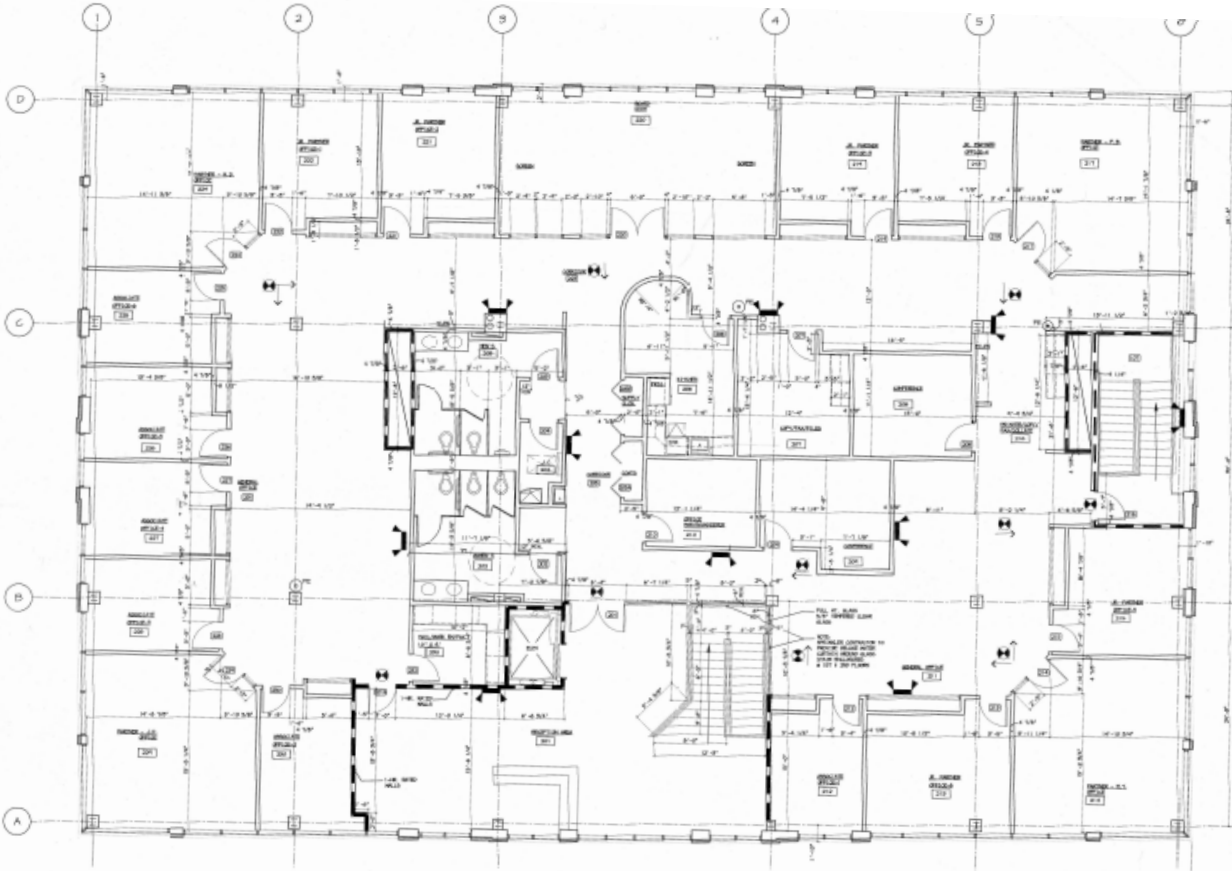
- Within close proximity to various shops, restaurants, service establishments, and daycares.
- Onsite parking for approximately one hundred (100) vehicles.



**Commercial Real Estate Services**

## PRIME OFFICE SPACE

# 1800 Pennbrook Parkway | North Wales | PA



\*Not to scale



**Commercial Real Estate Services**

The foregoing information was furnished to us by sources which we deem to be reliable, but no warranty or representation is made as to the accuracy thereof. Subject to correction of errors, omissions, change of price, prior sale or withdrawal from market without notice.

SitusProperties.com  
215-886-9400