

PRIME OFFICE SPACE

# The Atrium

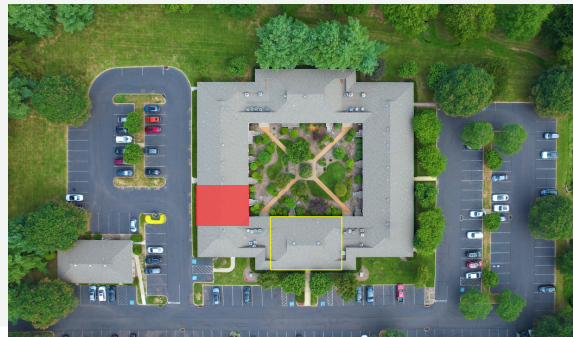
4 Terry Drive | Suite 4 | Newtown | PA

**SALE**



## PROPERTY HIGHLIGHTS

- Bi-level office condominium of approximately 2,400 square feet
- Move-in ready condition
- High end finishes throughout
- Immediate occupancy
- Ample parking
- Monument directory signage fronting Terry Drive
- Minutes to the center of Newtown
- Prominently located at the intersection of Terry Drive and Newtown Yardley Road offering convenient access to the Newtown bypass (Rt. 332) and I-95



**Commercial  
Real Estate  
Services**



**SitusProperties.com**  
**215-886-9400**

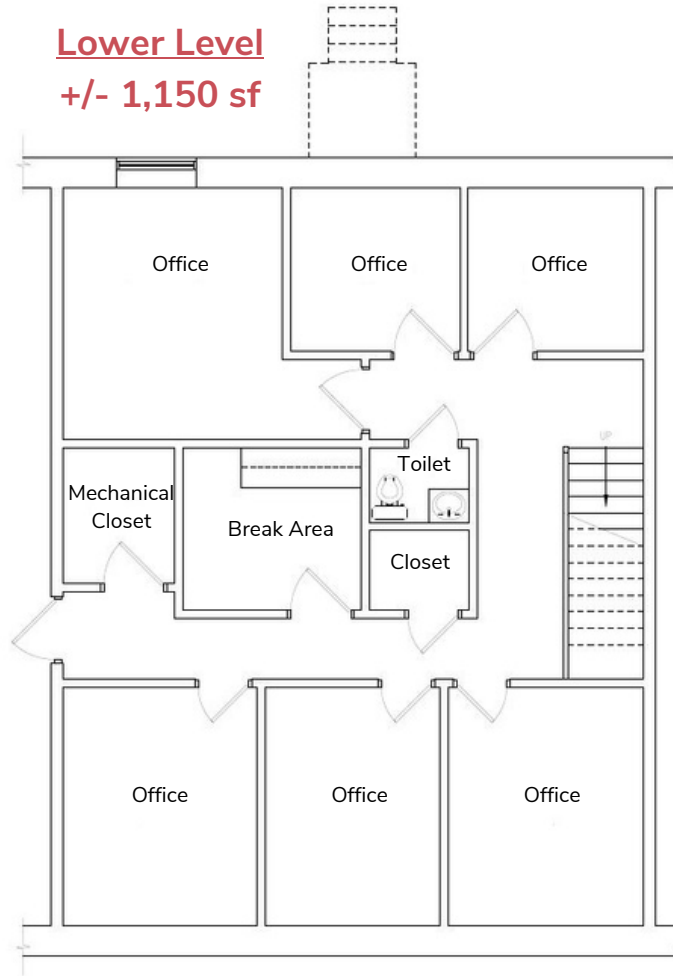
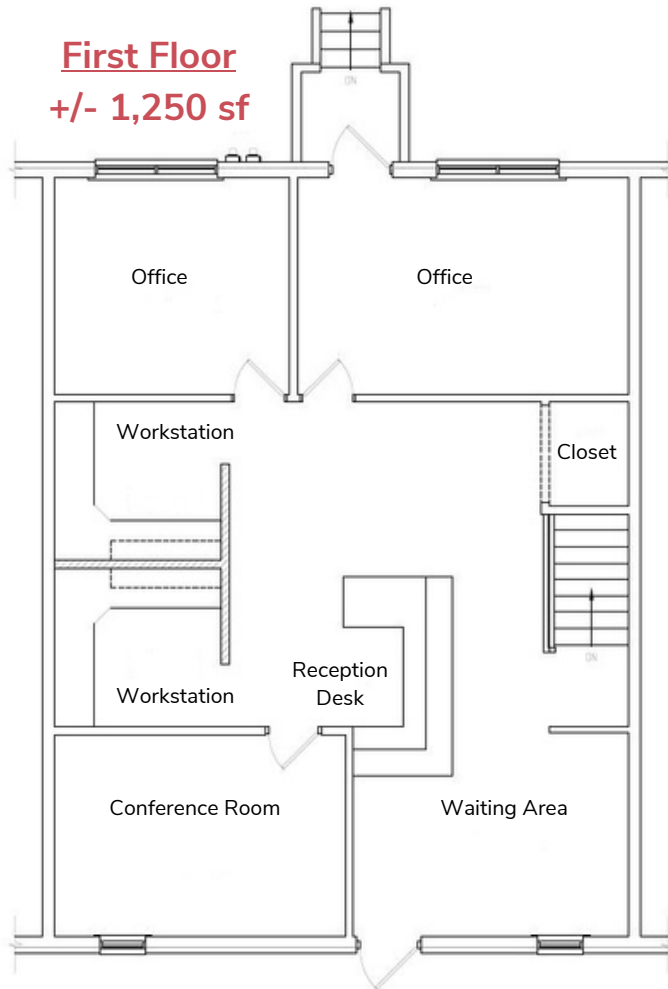
The foregoing information was furnished to us by sources which we deem to be reliable, but no warranty or representation is made as to the accuracy thereof. Subject to correction of errors, omissions, change of price, prior sale or withdrawal from market without notice.

PRIME OFFICE SPACE

# The Atrium

4 Terry Drive | Suite 4 | Newtown | PA

**Commercial  
Real Estate  
Services**



The foregoing information was furnished to us by sources which we deem to be reliable, but no warranty or representation is made as to the accuracy thereof. Subject to correction of errors, omissions, change of price, prior sale or withdrawal from market without notice.



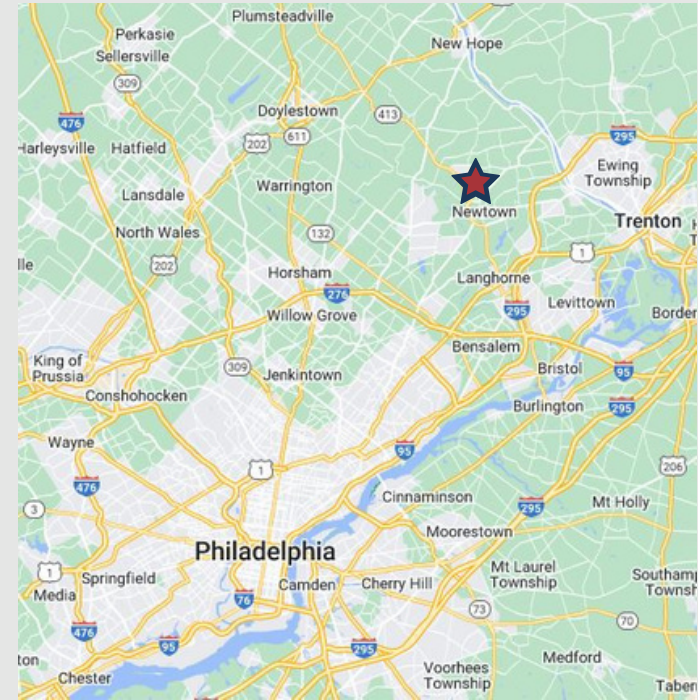
**SitusProperties.com**  
**215-886-9400**



PRIME OFFICE SPACE

# The Atrium

4 Terry Drive | Suite 4 | Newtown | PA



**Commercial Real Estate Services**

SitusProperties.com  
215-886-9400

The foregoing information was furnished to us by sources which we deem to be reliable, but no warranty or representation is made as to the accuracy thereof. Subject to correction of errors, omissions, change of price, prior sale or withdrawal from market without notice.