

PRIME COMMERCIAL/MEDICAL OFFICE BUILDING

300 Spruce Street | Doylestown | PA



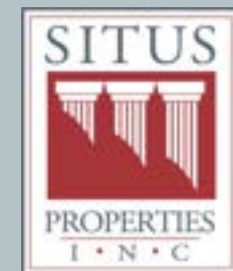
PROPERTY HIGHLIGHTS

- Two (2) story commercial/medical office building of approximately 2,480 square feet with a detached two (2) car garage on +/- 0.21 acres.
- Currently configured as a medical office.
- Equipped with a backup generator.
- On-site and street parking.
- Zoned FC-Freestanding Commercial.
- Situated on the corner of Spruce Street and North Street featuring prominent pylon signage.
- Walking distance to the center of Doylestown, the Bucks County Courthouse and 500,000 square feet of retail shopping and restaurants including Acme, Weis Markets, Starbucks, Staples and Target (Coming Soon!).
- Located just minutes to Doylestown Hospital, SEPTA Doylestown Station with convenient access to the Route 611 and 202 bypass.



**Commercial
Real Estate
Services**

**Located in
Doylestown
Borough**



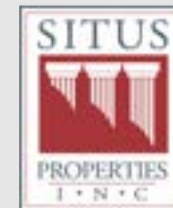
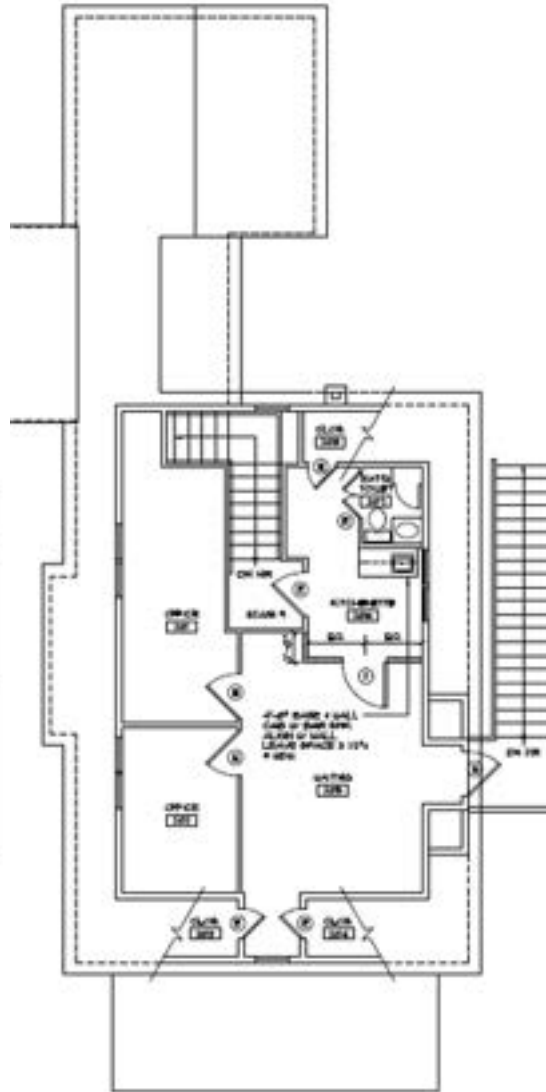
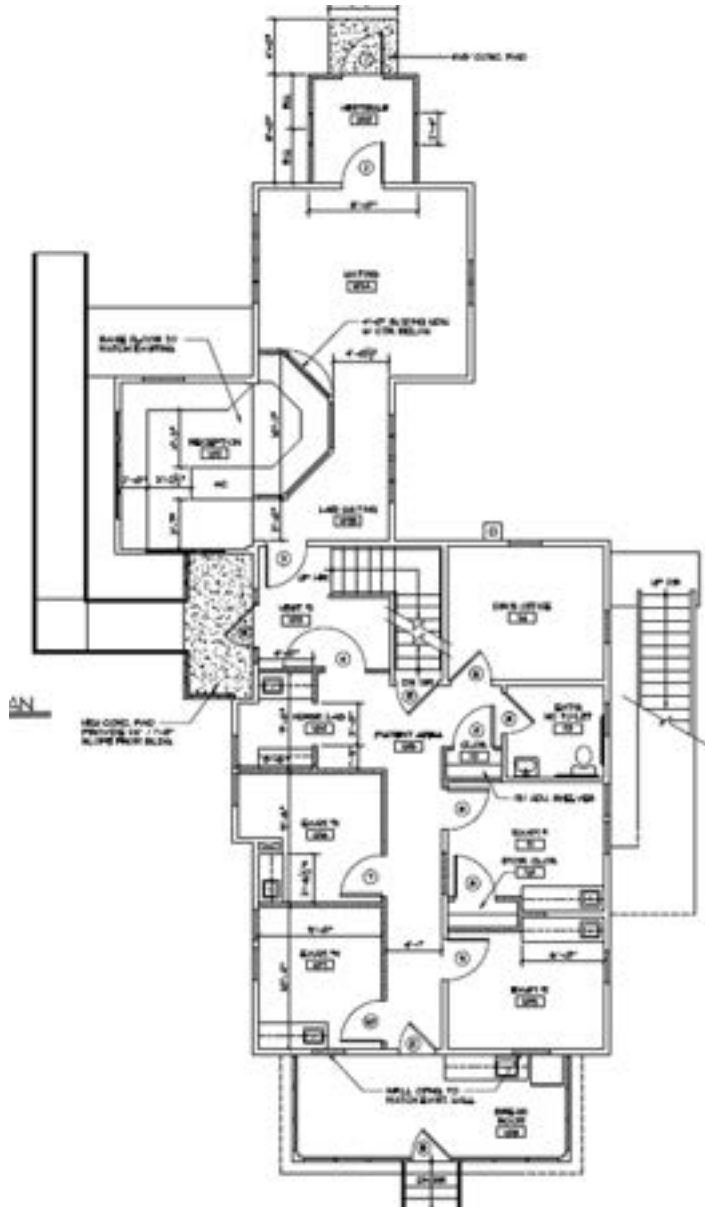
**SitusProperties.com
215-886-9400**

PRIME COMMERCIAL/MEDICAL OFFICE BUILDING

300 Spruce Street | Doylestown | PA

First Floor

Second Floor

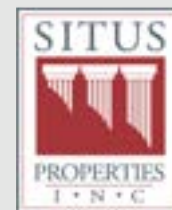


**Commercial
Real Estate
Services**

SitusProperties.com
215-886-9400

PRIME COMMERCIAL/MEDICAL OFFICE BUILDING

300 Spruce Street | Doylestown | PA



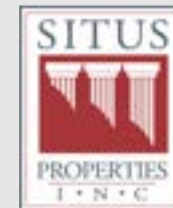
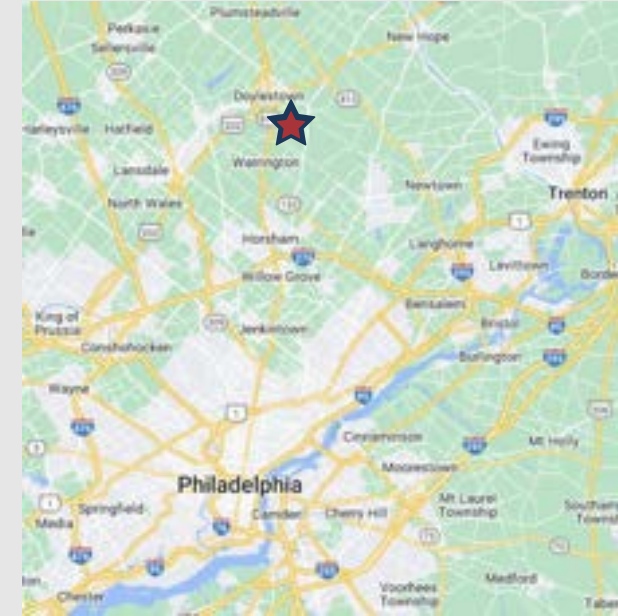
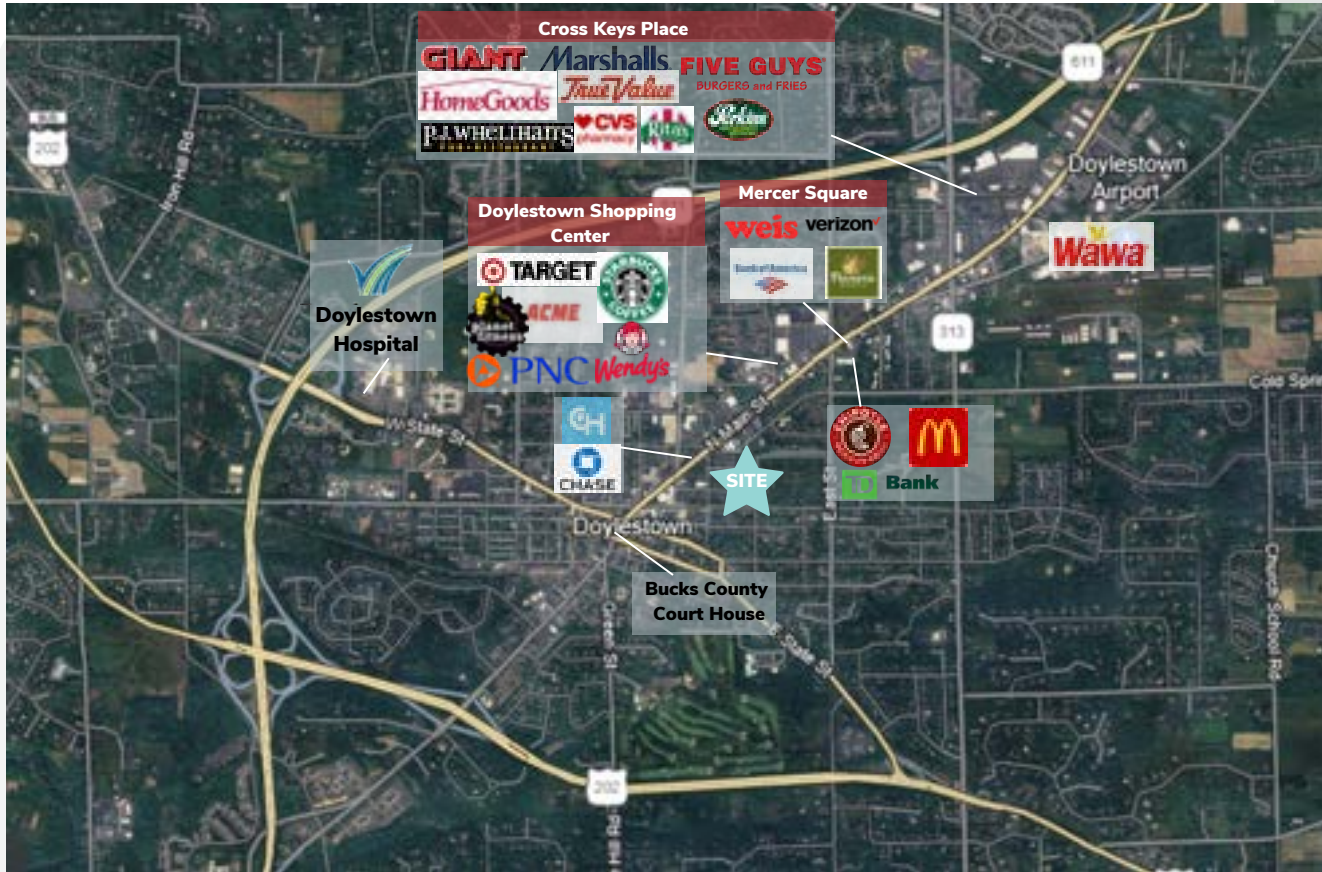
**Commercial
Real Estate
Services**

**SitusProperties.com
215-886-9400**

The foregoing information was furnished to us by sources which we deem to be reliable, but no warranty or representation is made as to the accuracy thereof. Subject to correction of errors, omissions, change of price, prior sale or withdrawal from market without notice.

PRIME COMMERCIAL/MEDICAL OFFICE BUILDING

300 Spruce Street | Doylestown | PA



**Commercial
Real Estate
Services**

**SitusProperties.com
215-886-9400**