

PROFESSIONAL OFFICE SPACE

200 E. Pennsylvania Avenue | Oreland | PA

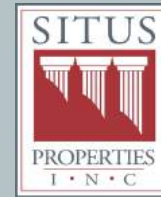


PROPERTY HIGHLIGHTS

- Professional office space available of approximately 500 square feet available for immediate occupancy.
- Direct tenant access in a self-contained space.
- Ample onsite and street parking.
- Located within a short walk to to SEPTA's Oreland Train Station with service to Lansdale, Doylestown, and Center City Philadelphia.
- Minutes from the Pennsylvania Turnpike (I-276) Fort Washington Interchange and Route 309.

Oreland

Oreland is a census-designated place in Montgomery County, Pennsylvania located in close proximity to Fort Washington, Glenside, and Flourtown. There are various shops and restaurants located along both Pennsylvania Avenue and Limekiln Pike connecting Oreland to the Pennsylvania Turnpike and Route 309.

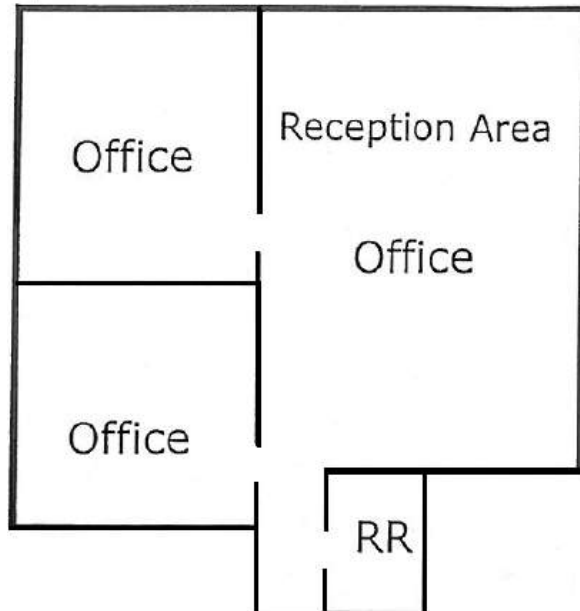


**Commercial
Real Estate
Services**

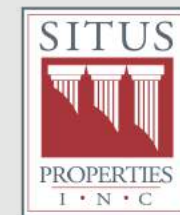
www.SitusProperties.com
215-886-9400

PROFESSIONAL OFFICE SPACE

200 E. Pennsylvania Avenue | Oreland | PA



The foregoing information was furnished to us by sources which we deem to be reliable, but no warranty or representation is made as to the accuracy thereof. Subject to correction of errors, omissions, change of price, prior sale or withdrawal from market without notice.



Commercial Real Estate Services

SitusProperties.com
215-886-9400