

PRIME OFFICE SPACE

542 N. Lewis Road | Royersford | PA

**Commercial
Real Estate
Services**

LEASE



PROPERTY HIGHLIGHTS

- Two (2) story office building containing 34,906 square feet plus lower level office area.
- Located within walking distance of a convenience store and banking.
- Seventy-five (75) car parking with additional parking available.
- Pylon and building exterior signage available.



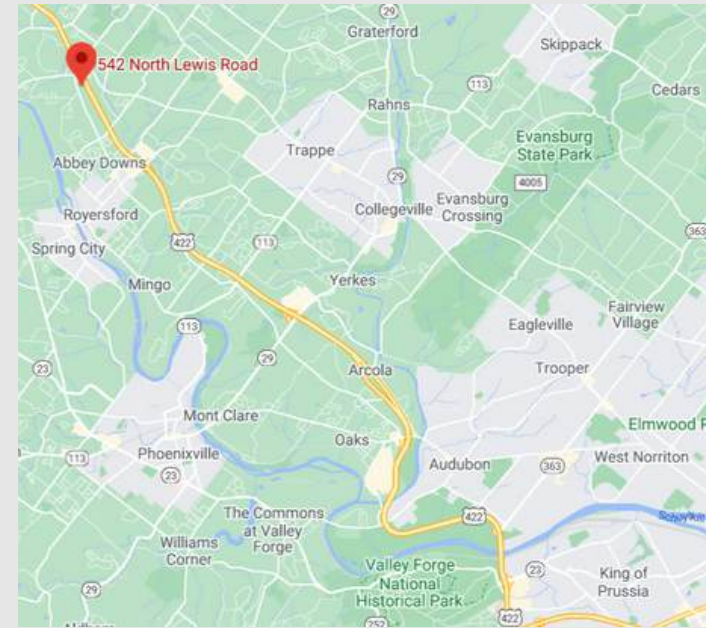
The foregoing information was furnished to us by sources which we deem to be reliable, but no warranty or representation is made as to the accuracy thereof. Subject to correction of errors, omissions, change of price, prior sale or withdrawal from market without notice.



SitusProperties.com
215-886-9400

PRIME OFFICE SPACE

542 N. Lewis Road | Royersford | PA



- Limerick Township has a population of approximately 19,000.
- The Limerick Exit has an average daily traffic count of 18,000 vehicles with 11,000 vehicles traveling on N. Lewis Road in and out of Royersford daily.

Royersford

- Strategically located at the Limerick Exit of the Pottstown Expressway (Route 422) approximately 10 minutes from the King of Prussia Interchange of the Pennsylvania Turnpike (Route I-276) and the Schuylkill Expressway (Route I-76) providing access throughout the Philadelphia metropolitan area.
- Adjacent to daycare centers and a bank branch, minutes from Royersford with shopping, restaurants and numerous service and retail establishments.

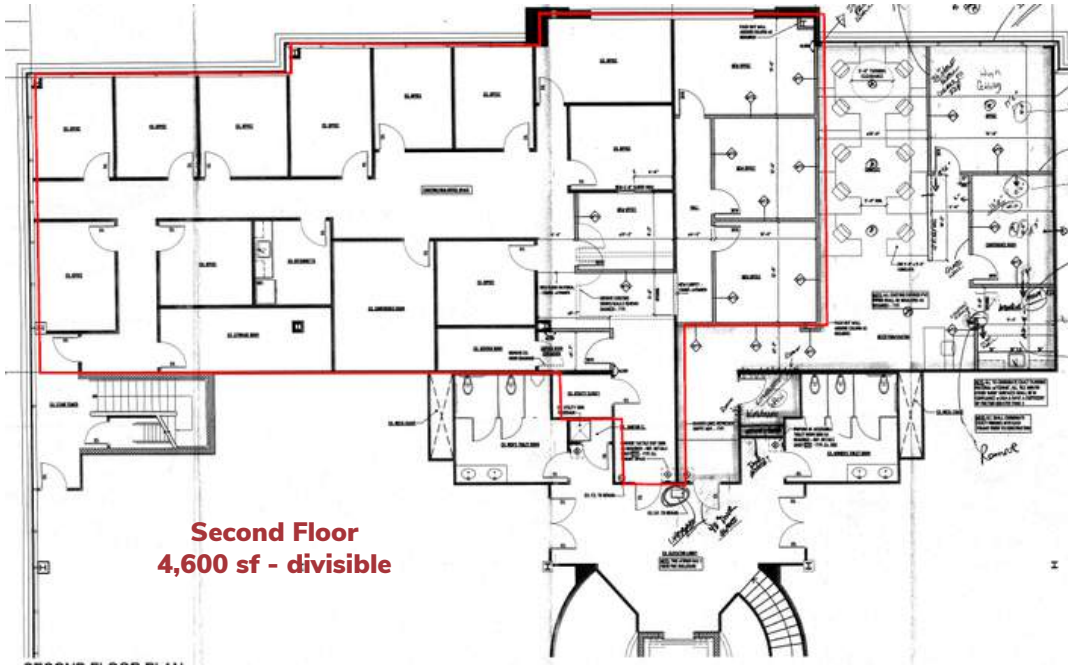


Commercial Real Estate Services

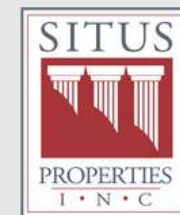
SitusProperties.com
215-886-9400

PRIME OFFICE SPACE

542 N. Lewis Road | Royersford | PA



Second Floor
4,600 sf - divisible



Commercial Real Estate Services

The foregoing information was furnished to us by sources which we deem to be reliable, but no warranty or representation is made as to the accuracy thereof. Subject to correction of errors, omissions, change of price, prior sale or withdrawal from market without notice.

SitusProperties.com
215-886-9400