

PRIME OFFICE SPACE

# The Reporter Building

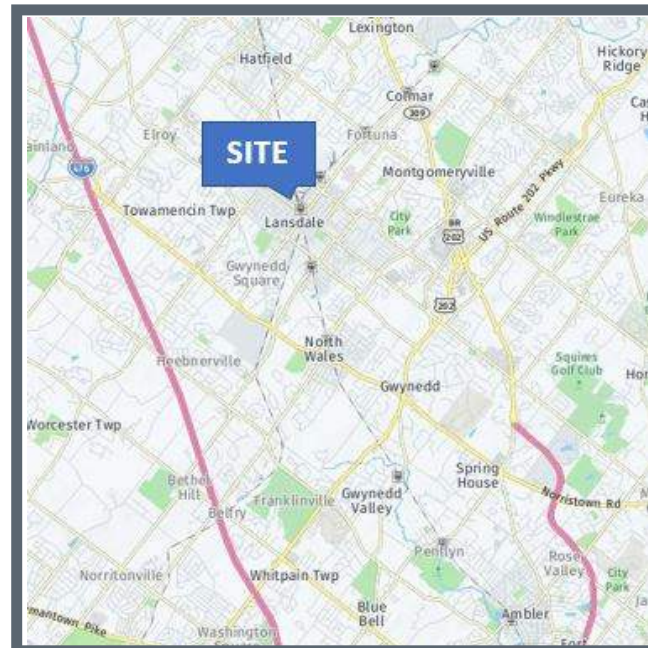
307 Derstine Avenue | Lansdale | PA

LEASE

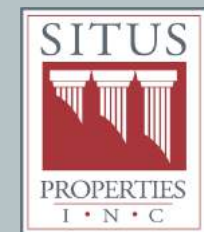


## PROPERTY HIGHLIGHTS

- Multi-tenant building of 32,000 +/- square feet.
- Available office space of 2,580 +/- square feet.
- Immediate occupancy.
- On- site parking.
- Located in the center of Lansdale Borough's retail corridor with convenient access to shopping, restaurants and the Madison Lansdale Station.
- Walking distance to the SEPTA Lansdale Train Station.



Commercial  
Real Estate  
Services



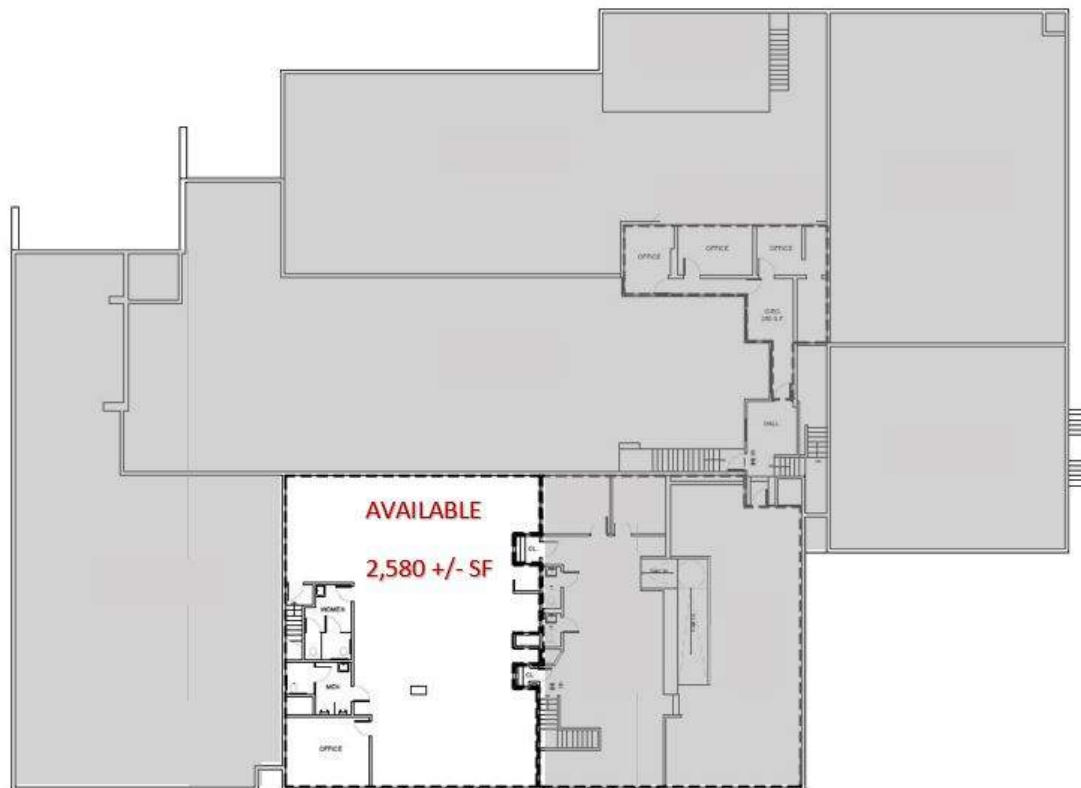
SitusProperties.com  
215-886-9400

The foregoing information was furnished to us by sources which we deem to be reliable, but no warranty or representation is made as to the accuracy thereof. Subject to correction of errors, omissions, change of price, prior sale or withdrawal from market without notice.

PRIME OFFICE SPACE

# The Reporter Building

307 Derstine Avenue | Lansdale | PA



**Second Floor**



**Commercial Real Estate Services**

The foregoing information was furnished to us by sources which we deem to be reliable, but no warranty or representation is made as to the accuracy thereof. Subject to correction of errors, omissions, change of price, prior sale or withdrawal from market without notice.

SitusProperties.com  
215-886-9400