

PRIME MEDICAL/OFFICE SPACE

Yorktown Plaza

8120 Old York Road | Elkins Park | PA



PROPERTY HIGHLIGHTS

- Mixed-use office and retail development of 75,000 square feet.
- Medical office space of approximately 6,107 square feet available.
- Existing medical infrastructure still in place.
- Elevator serviced.
- Ample surface and garage parking.
- SEPTA Commuter Bus Service stop located at the property.
- Strategically located on Old York Road (Route 611) providing direct access to Center City Philadelphia and suburban areas connection to the Pennsylvania Turnpike (I-276) six (6) miles to the north.



**Commercial
Real Estate
Services**



SitusProperties.com
215-886-9400

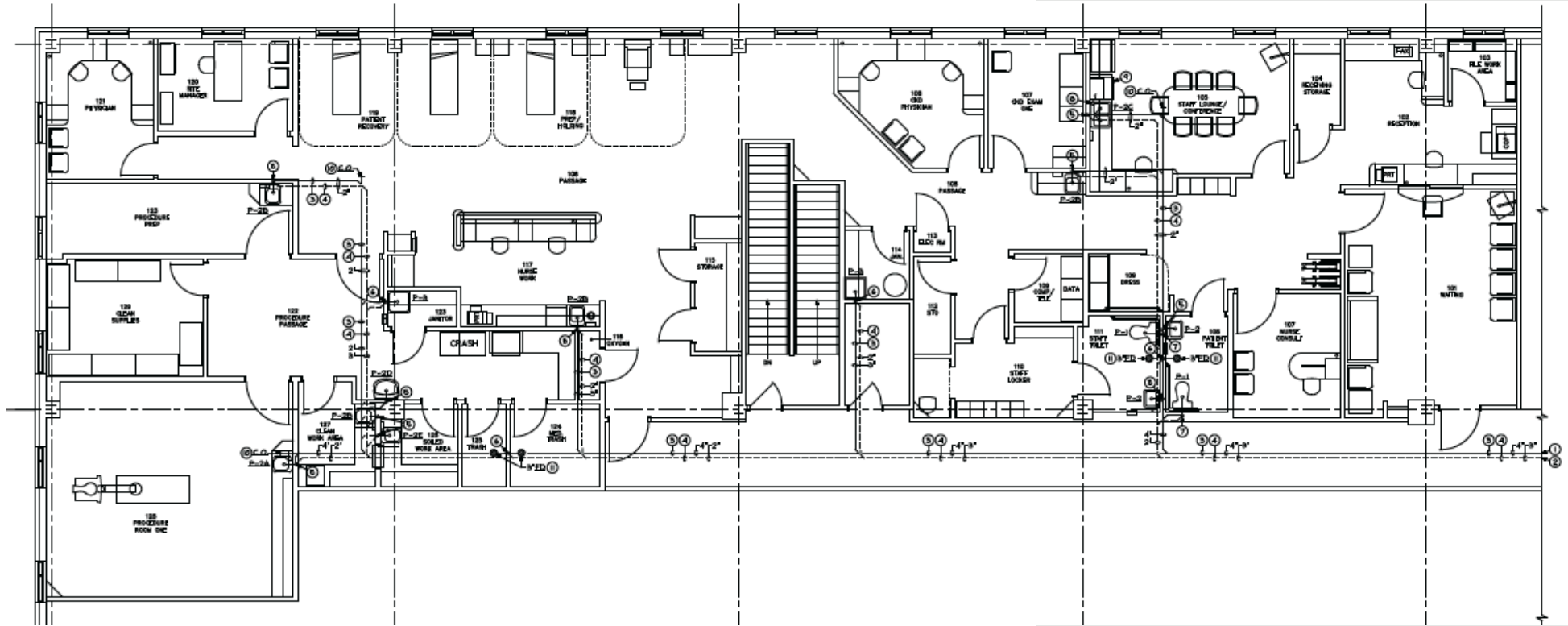
The foregoing information was furnished to us by sources which we deem to be reliable, but no warranty or representation is made as to the accuracy thereof. Subject to correction of errors, omissions, change of price, prior sale or withdrawal from market without notice.

PRIME MEDICAL/OFFICE SPACE

Yorktown Plaza

8120 Old York Road | Elkins Park | PA

2nd Floor



Commercial Real Estate Services

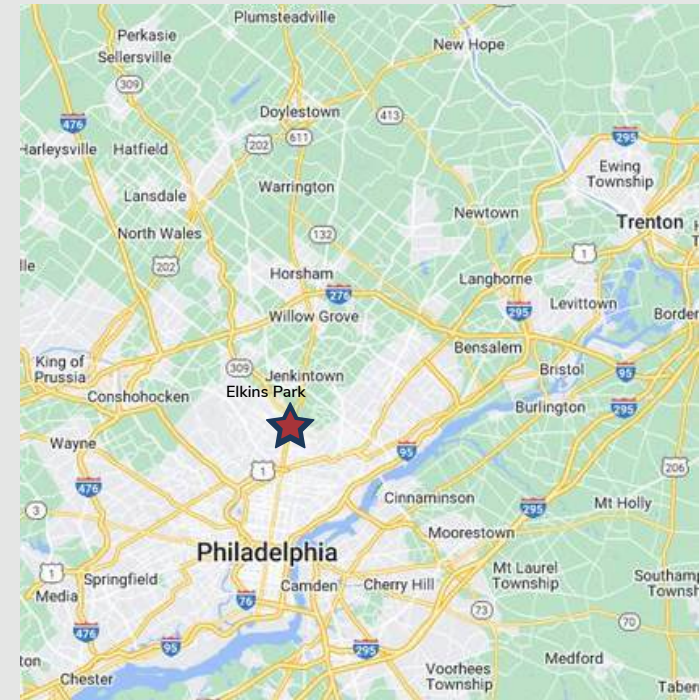
The foregoing information was furnished to us by sources which we deem to be reliable, but no warranty or representation is made as to the accuracy thereof. Subject to correction of errors, omissions, change of price, prior sale or withdrawal from market without notice.

SitusProperties.com
215-886-9400

PRIME MEDICAL/OFFICE SPACE

Yorktown Plaza

8120 Old York Road | Elkins Park | PA



Commercial Real Estate Services

The foregoing information was furnished to us by sources which we deem to be reliable, but no warranty or representation is made as to the accuracy thereof. Subject to correction of errors, omissions, change of price, prior sale or withdrawal from market without notice.

SitusProperties.com
215-886-9400